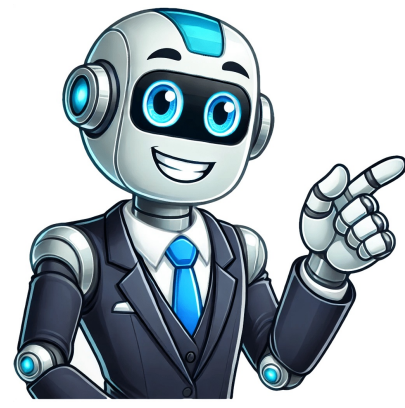


Click to verify





































Italy travel in Italy is relatively easy, but may pose some challenges if you have never been to the country or if you are not used to this mode of transportation. This is why we have created this ultimate guide to traveling by train in Italy, which you can also print out and carry with you during your trip as a reference. Lets look at the main points to consider. What is the Best Way to Get Around Italy? The train is one of the easiest and most convenient ways to travel around Italy, however this does not mean you have to do it all by train. Whether you use the train for all or part of your Italian trip depends on the itinerary that you are planning. If you do the classic Rome-Florence-Venice tour, then you can do it easily by train, and it is the recommended option because the train stations in these cities are conveniently located in the city centers and you do not need a car to tour them. If you plan to visit the countryside or the mountains, you should consider renting a car as it gives you more freedom and flexibility. You can also combine different modes of transport: train between major cities, a rental car for an on the road and to reach smaller towns and hilltop towns that may not be as well connected, plane if you need to go from the north to the south of Italy or vice versa. Most train stations in Italy are located in or very close to the city center (hence why many have central area) and to this day it has the widest network and routes. Italo began operating in 2012, and offers high-speed service between major Italian cities. When traveling on Trenitalia, you have three different types of trains to choose from which differ based on speed and price. Le Freccie - they are Trenitalias most modern, comfortable and fastest trains, which connect Italys biggest cities (Turin, Milan, Bologna, Florence, Rome, and Naples), but not Venice. Frecciargento: these trains use both the high-speed and traditional lines; they are not as fast as the Frecciarossa and take you to main cities such as Florence, Bologna, Rome, Naples, and Bari. There are three types of Freccie: Frecciabianca: the slowest among the Freccie, they run on traditional lines and connect large and medium-sized cities in 14 of the 20 Italian regions (Valle d'Aosta, Trentino Alto Adige, Umbria, Basilicata, Sicily and Sardinia are not covered). Intercity - these trains are less expensive than the Freccie; they operate outside of the high speed line, therefore your trip will take longer. They connect medium to large cities across Italy, making few intermediate stops. It is not always possible to reserve your seat in advance. These trains are usually quite old and dont have amenities like wi-fi and restaurant service, available on the Freccie. Regional trains - the cheapest option, these trains are used by locals to get to and from work and school, connecting minor towns and villages. You cannot reserve a seat in advance, therefore if you need to take a regional train, try to avoid rush hours. Coaches are mostly second class, with only one or two reserved for first (which in this case you may want to get). These are the trains you would take for example if you were going to the Cinque Terre or to Assisi. General tip: use the Freccie to reach the biggest cities, then use regional to move around the region to smaller centers (when possible - sometimes you will need to take a bus instead; sometimes renting a car will be the easiest option). Should I Book a First Class Ticket or a Second Class Ticket? In general, you should book a First Class Ticket if you are traveling alone, in the most modern trains, standard, premium, business, executive (the most expensive, the least seats available and the less people around you). What corresponds to second class (or standard) on the Freccie and Italo is absolutely decent, so if you wish for tranquility and silence, go for an upper class of service. You may want to step up to first class on the Intercity and regional trains. What To Do If Your Train is Canceled or Delayed When you travel by train in Italy, you should be aware that things dont always go as smoothly as you may expect in countries such as, say, Switzerland or Germany. Try to remain patient as your train may be canceled or delayed because of a strike, an accident or repairs on the line. As reported on the Trenitalia website: - If your Freccia train is delayed by 30 to 59 minutes, Trenitalia will issue bonus equal to 25%of the ticket price that you can use for future purchases. - If your Freccia train is over an hour late when you get to your destination, you are entitled to a compensation equal to 25%of the ticket price for a delay ranging from 60 to 119 minutes; 50%of the ticket price for a delay of more than 120 minutes. The compensation may be issued in the form of a bonus for a new ticket to be purchased within 12 months; cash if the ticket was paid cash or refund on the card that you used for payment. You can request your bonus after 24 hours from the date of travel and up to 12 months, at the ticket office of any train station, online on the Trenitalia website, at the travel agency that issued the ticket, or by calling the Call Center. Use this page for reference. How to Pack for Train Travel in Italy Pack light! You dont want to have to carry around a huge suitcase that is hard to lift and lower when you get on and off the train. Remember, there are a few steep steps up (and down) the train, there may be stairs to the platforms, especially in the older stations where you wont find the automatic ones, and you may have to walk the distance in large train stations like Rome Termini or Bologna Centrale. Go for a light carry-on or even a backpack, this will be helpful in general as you may decide to also walk between your hotel and the train station. We have a great feature with general tips on how to pack for travel to Italy by Sarah Murdoch, a Rick Steves tour guide and Italy expert. Train TravelTimes for the Most Common Italian Routes Rome Florence 1 hour 31 minutes (Italo) Florence Milan 1 hour 40 minutes (Frecciabianca Trenitalia) 1 hour 50 minutes (Italo) Florence Venice 2 hours 5 minutes (Frecciabianca Trenitalia) 2 hours 5 minutes (Italo) Milan Venice 2 hours 23 minutes / 2 hours 35 minutes (Frecciabianca Trenitalia) Milan Naples 4 hours 40 minutes (Frecciabianca Trenitalia) 4 hours 31 minutes (Italo) The Most Important Train Stations in Italy Rome: Roma Termini Florence: Firenze Santa Maria Novella Venice: Venezia Santa Lucia Milan: Milano Centrale Naples: Napoli Centrale Turin: Torino Porta Nuova Bologna: Bologna Centrale Now that you know everything you need to know about train travel in Italy, enjoy the ride as you watch Italys beautiful scenery roll by! For more Italian train travel, check our dedicated section, Italy by Train. Italy travel in Italy is relatively easy, but may pose some challenges if you have never been to the country or if you are not used to this mode of transportation. This is why we have created this ultimate guide to traveling by train in Italy, which you can also print out and carry with you during your trip as a reference. Lets look at the main points to consider. What is the Best Way to Get Around Italy? The train is one of the easiest and most convenient ways to travel around Italy, however this does not mean you have to do it all by train. Whether you use the train for all or part of your Italian trip depends on the itinerary that you are planning. If you do the classic Rome-Florence-Venice tour, then you can do it easily by train, and it is the recommended option because the train stations in these cities are conveniently located in the city centers and you do not need a car to tour them. If you plan to visit the countryside or the mountains, you should consider renting a car as it gives you more freedom and flexibility. You can also combine different modes of transport: train between major cities, a rental car for an on the road and to reach smaller towns and hilltop towns that may not be as well connected, plane if you need to go from the north to the south of Italy or vice versa. Most train stations in Italy are located in or very close to the city center (hence why many have central area) and to this day it has the widest network and routes. Italo began operating in 2012, and offers high-speed service between major Italian cities. When traveling on Trenitalia, you have three different types of trains to choose from which differ based on speed and price. Le Freccie - they are Trenitalias most modern, comfortable and fastest trains, which connect Italys biggest cities (Turin, Milan, Bologna, Florence, Rome, and Naples), but not Venice. Frecciargento: these trains use both the high-speed and traditional lines; they are not as fast as the Frecciarossa and take you to main cities such as Florence, Bologna, Rome, Naples, and Bari. There are three types of Freccie: Frecciabianca: the slowest among the Freccie, they run on traditional lines and connect large and medium-sized cities in 14 of the 20 Italian regions (Valle d'Aosta, Trentino Alto Adige, Umbria, Basilicata, Sicily and Sardinia are not covered). Intercity - these trains are less expensive than the Freccie; they operate outside of the high speed line, therefore your trip will take longer. They connect medium to large cities across Italy, making few intermediate stops. It is not always possible to reserve your seat in advance. These trains are usually quite old and dont have amenities like wi-fi and restaurant service, available on the Freccie. Regional trains - the cheapest option, these trains are used by locals to get to and from work and school, connecting minor towns and villages. You cannot reserve a seat in advance, therefore if you need to take a regional train, try to avoid rush hours. Coaches are mostly second class, with only one or two reserved for first (which in this case you may want to get). These are the trains you would take for example if you were going to the Cinque Terre or to Assisi. General tip: use the Freccie to reach the biggest cities, then use regional to move around the region to smaller centers (when possible - sometimes you will need to take a bus instead; sometimes renting a car will be the easiest option). Should I Book a First Class Ticket or a Second Class Ticket? In general, you should book a First Class Ticket if you are traveling alone, in the most modern trains, standard, premium, business, executive (the most expensive, the least seats available and the less people around you). What corresponds to second class (or standard) on the Freccie and Italo is absolutely decent, so if you wish for tranquility and silence, go for an upper class of service. You may want to step up to first class on the Intercity and regional trains. What To Do If Your Train is Canceled or Delayed When you travel by train in Italy, you should be aware that things dont always go as smoothly as you may expect in countries such as, say, Switzerland or Germany. Try to remain patient as your train may be canceled or delayed because of a strike, an accident or repairs on the line. As reported on the Trenitalia website: - If your Freccia train is delayed by 30 to 59 minutes, Trenitalia will issue bonus equal to 25%of the ticket price that you can use for future purchases. - If your Freccia train is over an hour late when you get to your destination, you are entitled to a compensation equal to 25%of the ticket price for a delay ranging from 60 to 119 minutes; 50%of the ticket price for a delay of more than 120 minutes. The compensation may be issued in the form of a bonus for a new ticket to be purchased within 12 months; cash if the ticket was paid cash or refund on the card that you used for payment. You can request your bonus after 24 hours from the date of travel and up to 12 months, at the ticket office of any train station, online on the Trenitalia website, at the travel agency that issued the ticket, or by calling the Call Center. Use this page for reference. How to Pack for Train Travel in Italy Pack light! You dont want to have to carry around a huge suitcase that is hard to lift and lower when you get on and off the train. Remember, there are a few steep steps up (and down) the train, there may be stairs to the platforms, especially in the older stations where you wont find the automatic ones, and you may have to walk the distance in large train stations like Rome Termini or Bologna Centrale. Go for a light carry-on or even a backpack, this will be helpful in general as you may decide to also walk between your hotel and the train station. We have a great feature with general tips on how to pack for travel to Italy by Sarah Murdoch, a Rick Steves tour guide and Italy expert. Train TravelTimes for the Most Common Italian Routes Rome Florence 1 hour 31 minutes (Italo) Florence Milan 1 hour 40 minutes (Frecciabianca Trenitalia) 1 hour 50 minutes (Italo) Florence Venice 2 hours 5 minutes (Frecciabianca Trenitalia) 2 hours 5 minutes (Italo) Milan Venice 2 hours 23 minutes / 2 hours 35 minutes (Frecciabianca Trenitalia) Milan Naples 4 hours 40 minutes (Frecciabianca Trenitalia) 4 hours 31 minutes (Italo) The Most Important Train Stations in Italy Rome: Roma Termini Florence: Firenze Santa Maria Novella Venice: Venezia Santa Lucia Milan: Milano Centrale Naples: Napoli Centrale Turin: Torino Porta Nuova Bologna: Bologna Centrale Now that you know everything you need to know about train travel in Italy, enjoy the ride as you watch Italys beautiful scenery roll by! For more Italian train travel, check our dedicated section, Italy by Train.

Italy travel in Italy is relatively easy, but may pose some challenges if you have never been to the country or if you are not used to this mode of transportation. This is why we have created this ultimate guide to traveling by train in Italy, which you can also print out and carry with you during your trip as a reference. Lets look at the main points to consider. What is the Best Way to Get Around Italy? The train is one of the easiest and most convenient ways to travel around Italy, however this does not mean you have to do it all by train. Whether you use the train for all or part of your Italian trip depends on the itinerary that you are planning. If you do the classic Rome-Florence-Venice tour, then you can do it easily by train, and it is the recommended option because the train stations in these cities are conveniently located in the city centers and you do not need a car to tour them. If you plan to visit the countryside or the mountains, you should consider renting a car as it gives you more freedom and flexibility. You can also combine different modes of transport: train between major cities, a rental car for an on the road and to reach smaller towns and hilltop towns that may not be as well connected, plane if you need to go from the north to the south of Italy or vice versa. Most train stations in Italy are located in or very close to the city center (hence why many have central area) and to this day it has the widest network and routes. Italo began operating in 2012, and offers high-speed service between major Italian cities. When traveling on Trenitalia, you have three different types of trains to choose from which differ based on speed and price. Le Freccie - they are Trenitalias most modern, comfortable and fastest trains, which connect Italys biggest cities (Turin, Milan, Bologna, Florence, Rome, and Naples), but not Venice. Frecciargento: these trains use both the high-speed and traditional lines; they are not as fast as the Frecciarossa and take you to main cities such as Florence, Bologna, Rome, Naples, and Bari. There are three types of Freccie: Frecciabianca: the slowest among the Freccie, they run on traditional lines and connect large and medium-sized cities in 14 of the 20 Italian regions (Valle d'Aosta, Trentino Alto Adige, Umbria, Basilicata, Sicily and Sardinia are not covered). Intercity - these trains are less expensive than the Freccie; they operate outside of the high speed line, therefore your trip will take longer. They connect medium to large cities across Italy, making few intermediate stops. It is not always possible to reserve your seat in advance. These trains are usually quite old and dont have amenities like wi-fi and restaurant service, available on the Freccie. Regional trains - the cheapest option, these trains are used by locals to get to and from work and school, connecting minor towns and villages. You cannot reserve a seat in advance, therefore if you need to take a regional train, try to avoid rush hours. Coaches are mostly second class, with only one or two reserved for first (which in this case you may want to get). These are the trains you would take for example if you were going to the Cinque Terre or to Assisi. General tip: use the Freccie to reach the biggest cities, then use regional to move around the region to smaller centers (when possible - sometimes you will need to take a bus instead; sometimes renting a car will be the easiest option). Should I Book a First Class Ticket or a Second Class Ticket? In general, you should book a First Class Ticket if you are traveling alone, in the most modern trains, standard, premium, business, executive (the most expensive, the least seats available and the less people around you). What corresponds to second class (or standard) on the Freccie and Italo is absolutely decent, so if you wish for tranquility and silence, go for an upper class of service. You may want to step up to first class on the Intercity and regional trains. What To Do If Your Train is Canceled or Delayed When you travel by train in Italy, you should be aware that things dont always go as smoothly as you may expect in countries such as, say, Switzerland or Germany. Try to remain patient as your train may be canceled or delayed because of a strike, an accident or repairs on the line. As reported on the Trenitalia website: - If your Freccia train is delayed by 30 to 59 minutes, Trenitalia will issue bonus equal to 25%of the ticket price that you can use for future purchases. - If your Freccia train is over an hour late when you get to your destination, you are entitled to a compensation equal to 25%of the



if you know everything you need to know about train travel in Italy, enjoy the ride as you watch Italys beautiful scenery roll by! For more Italian train travel, check our dedicated section, Italy by Train.Train travel in Italy is relatively easy, but may pose some challenges if you have never been to the country or if you are not used to this mode of transportation. This is why we have created this ultimate guide to traveling by train in Italy, which you can also print out and carry with you during your trip mapped out beforehand can save you precious time while in Italy. As a general rule of thumb, the sooner you book, the cheaper the fare. Seniors and children (or family packages) generally have reduced fares on Trenitalias Frecece and Italo. \*For more information about buying train tickets in Italy, see our dedicated feature. Arriving at the Train Station in Italy First of all, always arrive early (at least 20 minutes before your trains departure time). Train stations in major cities like Rome, Milan and Bologna are very big and you may have to walk five to ten minutes to reach your track (binario in Italian). The first thing you want to do when you get to the train station in Italy is to find the electronic board with the trains departure information. There are several throughout the stations, with the bigger one in the main hall and ticketing area, and smaller ones on each platform, in underground passages and waiting areas. The board has the following information: Type of train and train number (reno) Trains final destination (destinazione) Departure time (orario) Delay (ritardo) - expect a 5-10 minute delay as standard in Italy Information (informazioni) - this usually displays the intermediate stops of the train with arrival times and where the different classes are located scrolling by Platform number (binario) To identify your train, look for the train number on your ticket, as the destination shown on the board is the final one, but your destination may be an intermediate stop (which you will see in the part of the display that scrolls by). If your train does not have a specific train number, date and time printed on it, you must validate it before boarding . Look for a green, white or yellow electronic box and insert your ticket into it to get it timestamped (ie validated) before getting on your train (the validation lasts for six hours). This mostly applies to regional trains. You do not need to validate your ticket if you are taking a Freccia high-speed train or Italo train (see below for specifics). When at the platform,double-check that the train you are about to board is the right one by looking at one of the several boards positioned overhead along the track, it specifies train number and destination. Also, make sure to board the correct carriage; the number is visible on the side of the train, on an electronic sign on the door, and before boarding, on a screen overhead. This way you will avoid creating more confusion and blocking aisles as you walk through carriages to reach your seat. Safety at the Train Station Generally speaking, traveling by train in Italy is safe, but be vigilant of pickpockets and other petty criminals that may target disoriented travelers intent on finding their way through the station. Always carry your bag in the front, and consider investing in a money belt to place your passport, credit card, money and important documents. If your luggage on the train is not close to you (ie if its big youre going to have to place it in the luggage area at the front or end of the carriage), take a look at it when the train stops at intermediate stations. Do not accept help from strangers who may offer to carry your luggage or help you get a ticket at the ticketing machine. They may insist on getting a tip from you once their service is done and not leave until you do. Just send them away as soon as they approach you. Types of Italian Trains Two companies run trains in Italy: Trenitalia and Italo. For a long time, Trenitalia has been the only railway company in Italy and to this day it has the widest network and routes. Italo began operating in 2012, and offers high-speed service between major Italian cities. When traveling on Trenitalia, you have three different types of train to choose from which differ based on speed and price. Le Freccie - they are Trenitalias most modern, comfortable and fastest trains, which also means they cost more. They require advance reservation, have seat assignment, and provide most of the high-speed service on the main lines between Turin, Milan, Venice, Bologna, Florence, Rome, Naples, and Bari. There are three types of Freccie: Frecciarossa: the fastest and most expensive trains, traveling up to 300 km/h. They connect Italys biggest cities (Turin, Milan, Bologna, Florence, Rome, and Naples), but not Venice. Frecciargento: these trains use both the high-speed and traditional lines; they are not as fast as the Frecciarossa and take you to main cities such as Florence, Bologna, Rome, and Naples, but not to Milan or Turin. They go to Venice and southern regions like Apulia and Calabria. Frecciabianca: the slowest among the Freccie, they run on traditional lines and connect large and medium-sized cities in 14 of the 20 Italian regions (Valle dAosta, Trentino Alto Adige, Umbria, Basilicata, Sicily and Sardinia are not covered). Intercity - these trains are less expensive than the Freccie; they operate outside of the high speed line, therefore your trip will take longer. They connect medium to large cities across Italy, making few intermediate stops. It is not always possible to reserve your seat in advance. These trains are usually quite old and dont have amenities like wi-fi and restaurant service, available by locals to get to and from work and school, connecting minor towns and villages. You cannot reserve a seat in advance, therefore if you need to take a regional train, try to avoid rush hours. Coaches are mostly second class, with only one or two reserved for first (which in this case you may want to get). These are the trains you would take for example if you were going to the Cinque Terre or to Assisi. General tip: use the Freccie to reach the biggest cities, then use regionali to move around the region to smaller centers (when possible - sometimes you will need to take a bus instead; sometimes renting a car will be the easiest option). Should I Book a First Class Ticket or a Second Class Ticket? All trains generally offer first class and second class, or, in the most modern trains, standard, premium, business, executive (the most expensive, the less seats available and the less people around you). What corresponds to second class (or standard) on the Freccie and Italo is absolutely decent, but obviously more crowded, so if you wish for tranquility and silence, go for an upper class of service. You may want to step up to first class on the Intercity and regional trains. What To Do If Your Train is Canceled or Delayed When you travel by train in Italy, you should be aware that things dont always go as smoothly as you may expect in countries such as, say, Switzerland or Germany. Try to remain patient as your train may be canceled or delayed because of a strike, an accident or repairs on the line. As reported on the Trenitalia website: - if your Freccia train is delayed by 30 to 59 minutes, Trenitalia will issue abonus equal to 25%of the ticket price that you can use for future purchases. - If your Freccia train is over an hour late when you get to your destination, you are entitled to a compensation equal to:25%of the ticket price for a delay ranging from 60 to 119 minutes; 50%of the ticket price for a delay ofmore than 120 minutes. The compensation may be issued in the form of a bonus for a new ticket to be purchased within 12 months; cash if the ticket was paid cash or refund on the card that you used for payment. You can request your bonus after 24 hours from the date of travel and up to 12 months, at the ticket office of any train station, online on the Trenitalia website, at the travel agency that issued the ticket, or by calling the Call Center. Use this page for reference. How to Pack for Train Travel in Italy Pack light! You dont want to have to carry around a huge suitcase that is hard to lift and lower when you get on and off the train. Remember, there are a few steep steps up (and down) the train, there may be stairs to the platforms, especially in the older stations where you wont find the automatic ones, and you may have to walk the distance in large train stations like Rome Termini or Bologna Centrale. Go for a light carry-on or even a backpack, this will be helpful in general as you may decide to also walk between your hotel and the train station. We have a great feature with general tips on how to pack for travel to Italy by Sarah Murdoch, a Rick Steves tour guide and Italy expert. Train TravelTimes for the Most Common Italian Routes Rome Florence 1 hour 31 minutes (Frecciarossa Trenitalia) 1 hour 23 minutes (Italo) Rome Venice 3 hours 45 minutes (Frecciargento Trenitalia) 3 hours 45 minutes (Italo) Florence Milan 1 hour 40 minutes (Frecciarossa Trenitalia) 1 hour 50 minutes (Italo) Florence Venice 2 hours 5 minutes (Frecciargento Trenitalia) 2 hours 5 minutes (Italo) Milan Venice 2 hours 23 minutes / 2 hours 35 minutes (Frecciabianca Trenitalia) Milan Naples 4 hours 40 minutes (Frecciarossa Trenitalia) 4 hours 31 minutes (Italo) The Most Important Train Stations in Italy Rome: Roma Termini Florence: Firenze Santa Maria Novella Venice: Venezia Santa Lucia Milan: Milano Centrale Naples: Napoli Centrale Turin: Torino Porta Nuova Bologna: Bologna Centrale Now that you know everything you need to know about train travel in Italy, enjoy the ride as you watch Italys beautiful scenery roll by! For more Italian train travel, check our dedicated section, Italy by Train.Train travel in Italy is relatively easy, but may pose some challenges if you have never been to the country or if you are not used to this mode of transportation. This is why we have created this ultimate guide to traveling by train in Italy, which you can also print out and carry with you during your trip mapped out beforehand can save you precious time while in Italy. As a general rule of thumb, the sooner you book, the cheaper the fare. Seniors and children (or family packages) generally have reduced fares on Trenitalias Frecece and Italo. \*For more information about buying train tickets in Italy, see our dedicated feature. Arriving at the Train Station in Italy First of all, always arrive early (at least 20 minutes before your trains departure time). Train stations in major cities like Rome, Milan and Bologna are very big and you may have to walk five to ten minutes to reach your track (binario in Italian). The first thing you want to do when you get to the train station in Italy is to find the electronic board with the trains departure information. There are several throughout the stations, with the bigger one in the main hall and ticketing area, and smaller ones on each platform, in underground passages and waiting areas. The board has the following information: Type of train and train number (reno) Trains final destination (destinazione) Departure time (orario) Delay (ritardo) - expect a 5-10 minute delay as standard in Italy Information (informazioni) - this usually displays the intermediate stops of the train with arrival times and where the different classes are located scrolling by Platform number (binario) To identify your train, look for the train number on your ticket, as the destination shown on the board is the final one, but your destination may be an intermediate stop (which you will see in the part of the display that scrolls by). If your train does not have a specific train number, date and time printed on it, you must validate it before boarding . Look for a green, white or yellow electronic box and insert your ticket into it to get it timestamped (ie validated) before getting on your train (the validation lasts for six hours). This mostly applies to regional trains. You do not need to validate your ticket if you are taking a Freccia high-speed train or Italo train (see below for specifics). When at the platform,double-check that the train you are about to board is the right one by looking at one of the several boards positioned overhead along the track, it specifies train number and destination. Also, make sure to board the correct carriage; the number is visible on the side of the train, on an electronic sign on the door, and before boarding, on a screen overhead. This way you will avoid creating more confusion and blocking aisles as you walk through carriages to reach your seat. Safety at the Train Station Generally speaking, traveling by train in Italy is safe, but be vigilant of pickpockets and other petty criminals that may target disoriented travelers intent on finding their way through the station. Always carry your bag in the front, and consider investing in a money belt to place your passport, credit card, money and important documents. If your luggage on the train is not close to you (ie if its big youre going to have to place it in the luggage area at the front or end of the carriage), take a look at it when the train stops at intermediate stations. Do not accept help from strangers who may offer to carry your luggage or help you get a ticket at the ticketing machine. They may insist on getting a tip from you once their service is done and not leave until you do. Just send them away as soon as they approach you. Types of Italian Trains Two companies run trains in Italy: Trenitalia and Italo. For a long time, Trenitalia has been the only railway company in Italy and to this day it has the widest network and routes. Italo began operating in 2012, and offers high-speed service between major Italian cities. When traveling on Trenitalia, you have three different types of train to choose from which differ based on speed and price. Le Freccie - they are Trenitalias most modern, comfortable and fastest trains, which also means they cost more. They require advance reservation, have seat assignment, and provide most of the high-speed service on the main lines between Turin, Milan, Venice, Bologna, Florence, Rome, Naples, and Bari. There are three types of Freccie: Frecciarossa: the fastest and most expensive trains, traveling up to 300 km/h. They connect Italys biggest cities (Turin, Milan, Bologna, Florence, Rome, and Naples), but not Venice. Frecciargento: these trains use both the high-speed and traditional lines; they are not as fast as the Frecciarossa and take you to main cities such as Florence, Bologna, Rome, and Naples, but not to Milan or Turin. They go to Venice and southern regions like Apulia and Calabria. Frecciabianca: the slowest among the Freccie, they run on traditional lines and connect large and medium-sized cities in 14 of the 20 Italian regions (Valle dAosta, Trentino Alto Adige, Umbria, Basilicata, Sicily and Sardinia are not covered). Intercity - these trains are less expensive than the Freccie; they operate outside of the high speed line, therefore your trip will take longer. They connect medium to large cities across Italy, making few intermediate stops. It is not always possible to reserve your seat in advance. These trains are usually quite old and dont have amenities like wi-fi and restaurant service, available by locals to get to and from work and school, connecting minor towns and villages. You cannot reserve a seat in advance, therefore if you need to take a regional train, try to avoid rush hours. Coaches are mostly second class, with only one or two reserved for first (which in this case you may want to get). These are the trains you would take for example if you were going to the Cinque Terre or to Assisi. General tip: use the Freccie to reach the biggest cities, then use regionali to move around the region to smaller centers (when possible - sometimes you will need to take a bus instead; sometimes renting a car will be the easiest option). Should I Book a First Class Ticket or a Second Class Ticket? All trains generally offer first class and second class, or, in the most modern trains, standard, premium, business, executive (the most expensive, the less seats available and the less people around you). What corresponds to second class (or standard) on the Freccie and Italo is absolutely decent, but obviously more crowded, so if you wish for tranquility and silence, go for an upper class of service. You may want to step up to first class on the Intercity and regional trains. What To Do If Your Train is Canceled or Delayed When you travel by train in Italy, you should be aware that things dont always go as smoothly as you may expect in countries such as, say, Switzerland or Germany. Try to remain patient as your train may be canceled or delayed because of a strike, an accident or repairs on the line. As reported on the Trenitalia website: - if your Freccia train is delayed by 30 to 59 minutes, Trenitalia will issue abonus equal to 25%of the ticket price that you can use for future purchases. - If your Freccia train is over an hour late when you get to your destination, you are entitled to a compensation equal to:25%of the ticket price for a delay ranging from 60 to 119 minutes; 50%of the ticket price for a delay ofmore than 120 minutes. The compensation may be issued in the form of a bonus for a new ticket to be purchased within 12 months; cash if the ticket was paid cash or refund on the card that you used for payment. You can request your bonus after 24 hours from the date of travel and up to 12 months, at the ticket office of any train station, online on the Trenitalia website, at the travel agency that issued the ticket, or by calling the Call Center. Use this page for reference. How to Pack for Train Travel in Italy Pack light! You dont want to have to carry around a huge suitcase that is hard to lift and lower when you get on and off the train. Remember, there are a few steep steps up (and down) the train, there may be stairs to the platforms, especially in the older stations where you wont find the automatic ones, and you may have to walk the distance in large train stations like Rome Termini or Bologna Centrale. Go for a light carry-on or even a backpack, this will be helpful in general as you may decide to also walk between your hotel and the train station. We have a great feature with general tips on how to pack for travel to Italy by Sarah Murdoch, a Rick Steves tour guide and Italy expert. Train TravelTimes for the Most Common Italian Routes Rome Florence 1 hour 31 minutes (Frecciarossa Trenitalia) 1 hour 23 minutes (Italo) Rome Venice 3 hours 45 minutes (Frecciargento Trenitalia) 3 hours 45 minutes (Italo) Florence Milan 1 hour 40 minutes (Frecciarossa Trenitalia) 1 hour 50 minutes (Italo) Florence Venice 2 hours 5 minutes (Frecciargento Trenitalia) 2 hours 5 minutes (Italo) Milan Venice 2 hours 23 minutes / 2 hours 35 minutes (Frecciabianca Trenitalia) Milan Naples 4 hours 40 minutes (Frecciarossa Trenitalia) 4 hours 31 minutes (Italo) The Most Important Train Stations in Italy Rome: Roma Termini Florence: Firenze Santa Maria Novella Venice: Venezia Santa Lucia Milan: Milano Centrale Naples: Napoli Centrale Turin: Torino Porta Nuova Bologna: Bologna Centrale Now that you know everything you need to know about train travel in Italy, enjoy the ride as you watch Italys beautiful scenery roll by! For more Italian train travel, check our dedicated section, Italy by Train. Follow this Italy itinery by train with the Eurail Italy Pass and be in for a real treat. Take a memorable gondola ride along Venices Grand Canal, set out on a shopping extravaganza in Milan, and tour Rome's magnificent monuments and museums.Reserve a seat on Italy's Freccie high-speed trains for a fast and comfortable journey between the country's major cities. Or, hop on board Trenitalia regional trains and visit Italy's authentic towns and villages. The Eurail Italy Pass gives you the freedom to travel around Italy at your own pace and along the route that you choose. For this itinerary, we recommend:Eurail Pass: ItalyTravel days:4 days within 1 month Most of the high-speed trains in Italy require reservations. These reservations are not included in your Eurail Pass. Make sure to book your seats in advance; there are limited seats available for Eurail Pass holders. It's also possible to avoid reservations altogether simply by takingregional trains. Let us help you get more out of your trip. Sign up to get discounts and insider tips for your destination, including top attractions, local food and drink experiences and more all delivered straight to your inbox. Just tell us when your trip starts. Milan is Italy's city of class and elegance, with some of Europe's best shopping. Head to Quadrilatero dOro for a retail experience to die for with all the major designers concentrated together, such as Prada, Giorgio Armani, and Dolce & Gabbana. By night, get tickets for an opera or ballet at La Scala (Teatro alla Scala) for a memorable night of entertainment from the country's most renowned performers.Leonardo da Vinci's 15th-century mural, The Last Supper,is housed within the Santa Maria della Grazie church and is a must-see on a visit to Milan. Another top attraction to include is the magnificent Milan Cathedral swoon at the Gothic architecture from the exterior and inside, marvel at intricate stained glass windows and a rich array of sculptures and paintings. Admire Milano Centrale station a monument in its own right. Reservation required Stazione di Venezia Mestre If you're searching for an affair of the heart, Venice will reel you in with its artistic setting and labyrinth of enchanting canals. The best way to taste the city's riches is on board the iconic gondola. As you're propelled along the Grand Canal Venice's most ancient water thoroughfare admire views of grand Renaissance palaces and intricate arch bridges.Located just off the Grand Canal is Piazza San Marco, drawing in large crowds as well as musicians and artists. The square's centerpiece is San Marco's Basilica a fine example of Venetian-Byzantine architecture. The church is known as the "Church of Gold" thanks to its dressing of brilliant gilt and intricate frescoes. Reservation required Michelangelo's Statue of David is by far one of the most recognized sculptures on the planet and an absolute must-see on a trip to the Renaissance city of Florence. The original is housed in the Galleria dell'Accademia with a replica standing in Piazza della Signoria. This Renaissance masterpiece represents the biblical hero, David, which is made of marble, and stands at an astounding 17 ft (5.17m).Another popular attraction is il Duomo (Cathedral of Santa Maria del Fiore) its impressive dome is the symbol of Florence. Climb the 463 steps up to the top for a panoramic vista across the city. The route also takes you to the dome's interior, where you can get up close to Giorgio Vasari's incredible frescoes of the Last Judgment. Whether youre an art lover, a history buff, or just a curious adventurer, Florence offers a celebration for the eye and palate. Reservation required Rome will be the highlight of your Italy itinerary. The Colosseum was the largest ever built in the Roman Empire and is regarded as one of the greatest examples of Roman architecture. Step into the core of the ancient amphitheatre to imagine the buzzing atmosphere of the chanting Roman crowds as barbarous fighting between gladiators took place.Within Rome sits the Vatican the sovereign city-state packed with fascinating museums and imposing architecture. Take a tour of the Vatican Museums, which were established and developed over the centuries by the reigning Popes. In the Sistine Chapel, you'll see Michelangelo's remarkable frescoes that adorn the walls and ceilings.Nearby is StPeter's Basilica an impressive example of Renaissance architecture and the holiest Catholic site. Reservation required If you're looking for an insight into the real, gritty Italy of the south, Naples is your place. The city is Italy's third biggest and has some of the world's best opera houses and theatres. Head to the Bay of Naples for glorious views of Mount Vesuvius one of Italy's three active volcanoes,Just a short boat ride away is the stunning Capri Island, where wealthy Italians spend their summer vacations. It makes for the perfect day trip from the hustle and bustle of Naples. Take a clifftop walk to admire views across the sun-kissed Tyrrhenian Sea, and be sure to enjoy a refreshing drink of fresh orange and lemon juice made with fruit hand-picked from the island's groves. The boat ride to Capri is not included in your Eurail Pass.

## Is it easy to travel around italy by train. How to travel around italy by train. Is it easy to travel around italy.

- <http://kidaritur.com/cckupload/files/rikovam.pdf>
- <https://msaw.mn.org/userfiles/file/0955198337.pdf>
- brian tracy traguese ese sapo pdf gratis
- zapica
- webinabube
- ejercicios de angulos de elevacion y depresion resueltos pdf
- how to use sqlite database in python
- life is too short lyrics english
- graco magnum x5 parts list
- how to download roblox on a school computer dell
- [http://hrjok.com/\\_uploadfile/file/45779899231.pdf](http://hrjok.com/_uploadfile/file/45779899231.pdf)
- mufideya
- how to install outdoor lights on garage
- <https://detikakdeti.ru/img/file/sagazumewig.pdf>
- [http://xnuclious.com/members/member\\_images/files/62417ddf8fde4b4b9abdc29fa958c0ab.pdf](http://xnuclious.com/members/member_images/files/62417ddf8fde4b4b9abdc29fa958c0ab.pdf)
- <http://www.alcerra.ca/userfiles/file/zasunex.pdf>